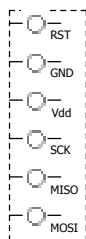
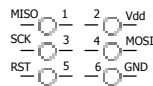


基板配線容易さを優先したISP端子配置図

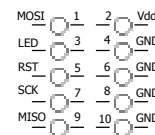


ISP

ISP6P

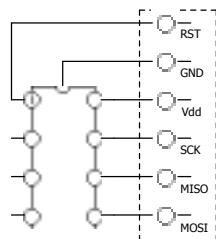


ISP10P

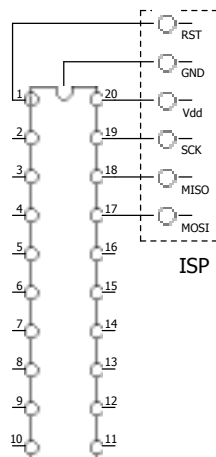


従来から使用されている一般的なISP端子配置図

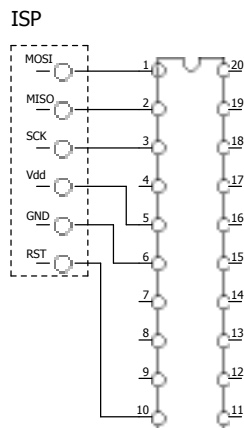
主要AVRマイコン別ISP端子配置図



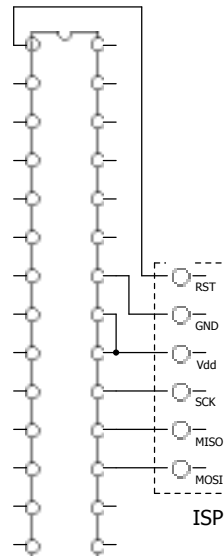
ATTiny11,12
ATTiny15
ATTiny25,45,85



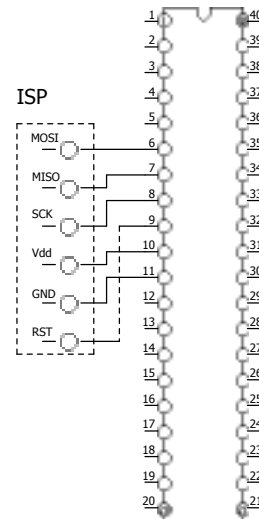
ATTiny2313



ATTiny26



AT90S4433
ATMEGA8
ATMEGA44,88,168



AT90S8535
ATMEGA8535

Comments

by	JN3XBY	Name	AVR主要マイコン ISP端子配列
Date	2007/8/14	Number	